



Photo Courtesy of: DFWELE Riverways

The Baker Dam

‘A Rock Ramp’

The Lower Mills on the Neponset River
A View From Milton onto Boston

Existing Conditions



Photo Simulation by: Milone & MacBroom, Inc.

Photo-Simulation
Partial Dam Removal
(No Improved Fish Passage Shown)



Photo Simulation by: Milone & MacBroom, Inc.

Photo-Simulation
Partial & Complete Spillway Removal
(Conceptual Fish Passage Shown)

Engineering,
Landscape Architecture
and Environmental Science



Photo Courtesy of Milone & MacBroom, Inc.

Existing Conditions

The Baker Dam

‘Winter at the Mill’

The Lower Mills on the Neponset River
A View From Milton onto Boston (Dorchester)



Photo Simulation by: Milone & MacBroom, Inc.

Photo-Simulation
Partial Dam Removal
(No Improved Fish Passage Shown)



Photo Simulation by: Milone & MacBroom, Inc.

Photo-Simulation
Partial Dam Removal with Rock Ramp
(Conceptual Fish Passage Shown)

Engineering,
Landscape Architecture
and Environmental Science

 **MILONE & MACBROOM®**



Photo Courtesy of DFWELE Riverways

Existing Conditions

The Baker Dam

'Installation of a Fish Ladder'
The Lower Mills on the Neponset River
A View From Milton onto Boston

Conceptual Rendering
Fish Ladder Installation at Baker Dam
(Conceptual Improved Fish Passage
Shown)



Conceptual Rendering by
Milone & MacBroom, Inc.



Photo Courtesy of
Milone & MacBroom, Inc.

Existing Conditions

The Tilestone & Hollingsworth Dam

'Fish Ladder at T & H'

A View From the Western Banks

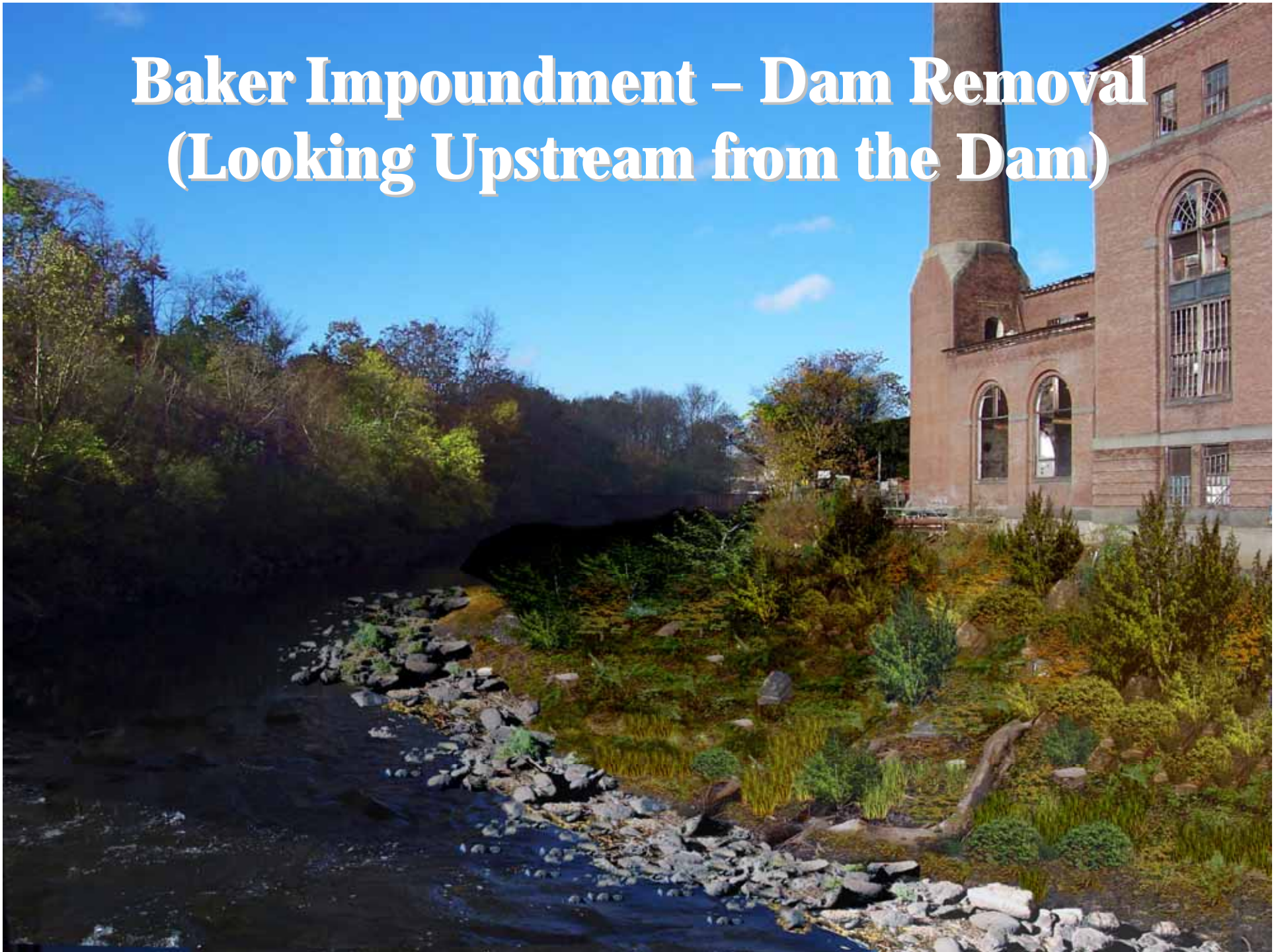
Conceptual Rendering
Full Dam Removal
(Conceptual Fish Passage Shown)



Baker Impoundment - Existing Conditions (Looking Upstream from the Dam)



Baker Impoundment – Dam Removal (Looking Upstream from the Dam)

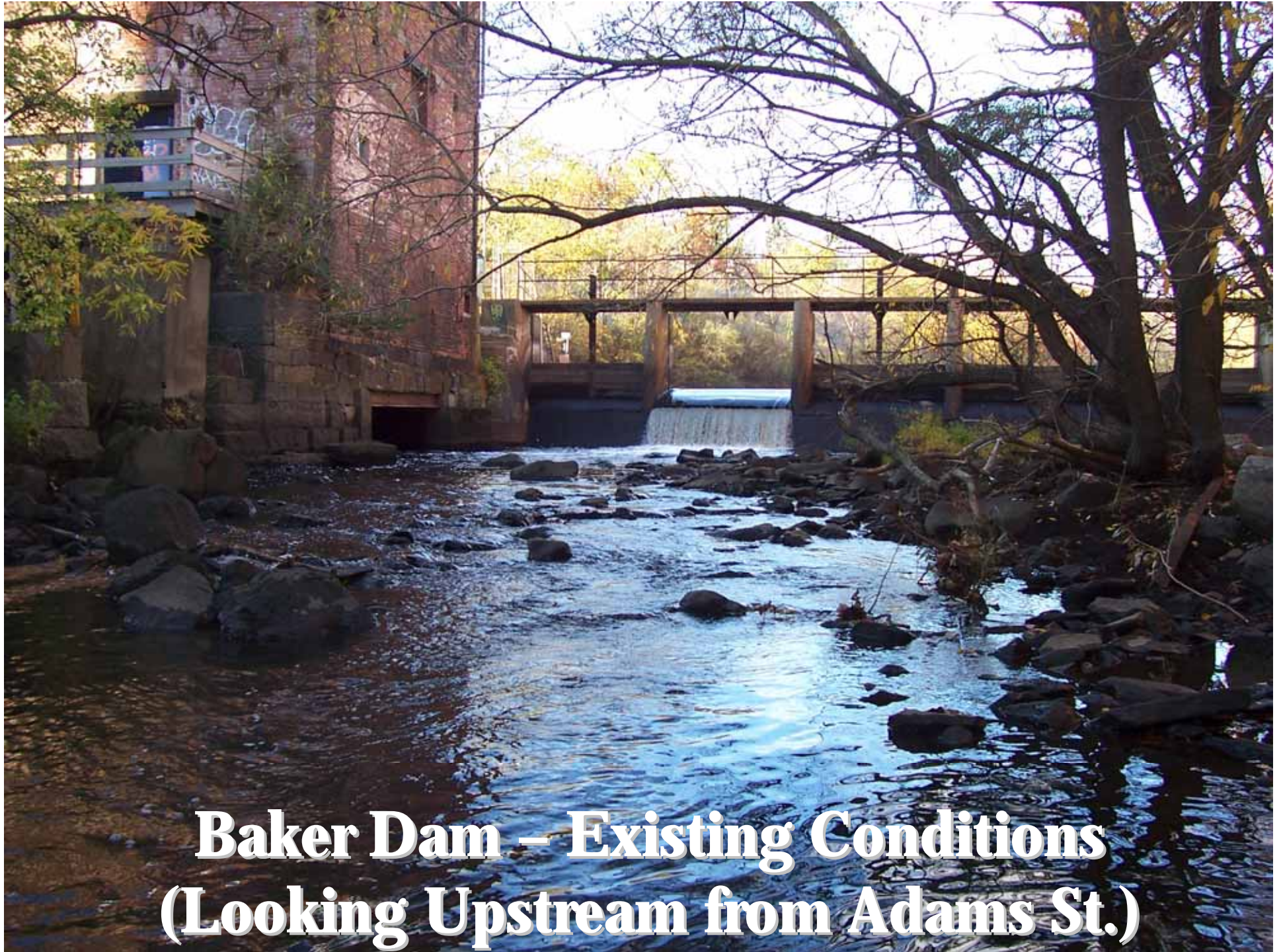


Baker Impoundment - Existing Conditions (Looking Downstream from Pedestrian Bridge)

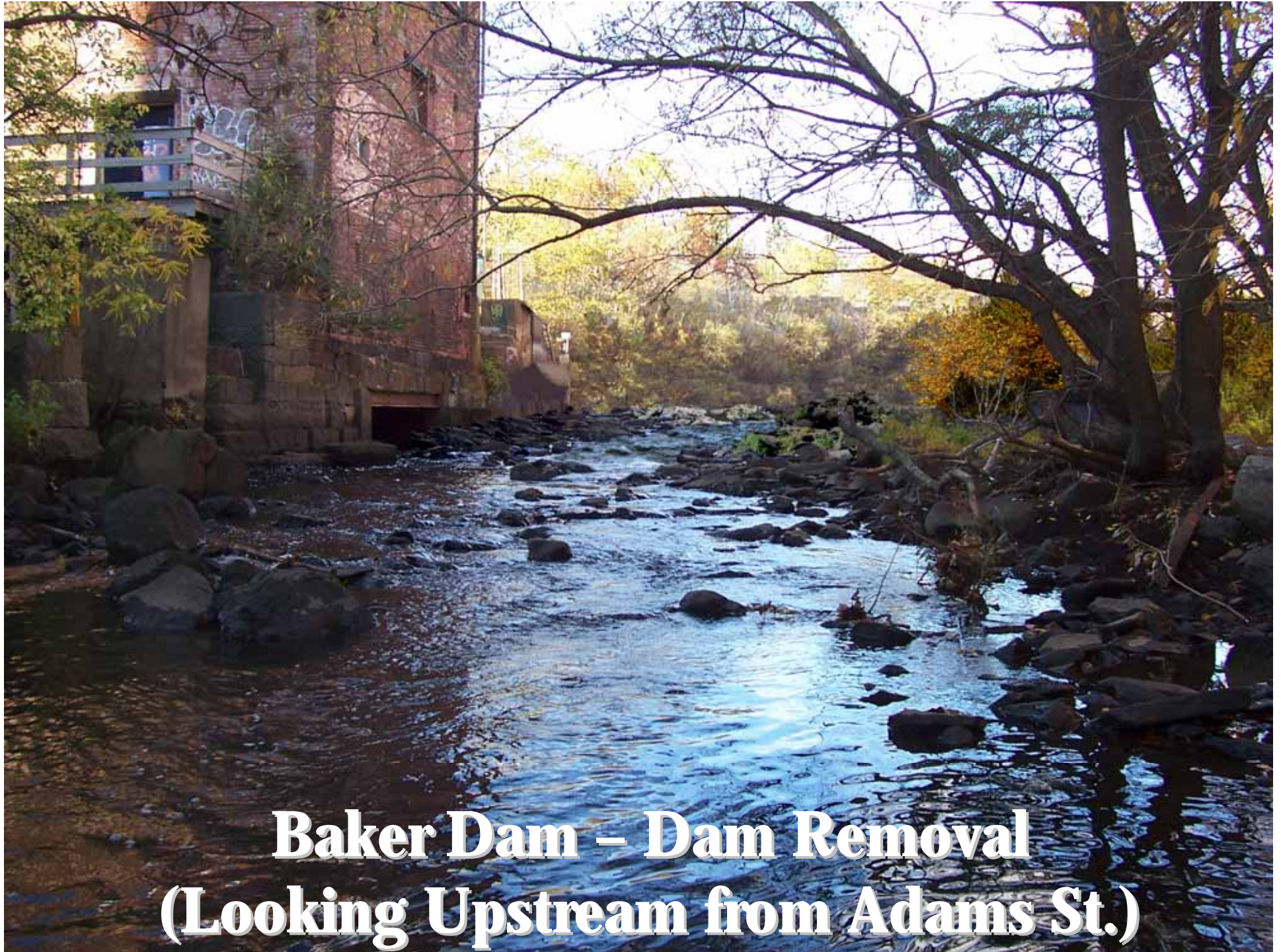


Baker Impoundment – Dam Removal (Looking Downstream from Pedestrian Bridge)





**Baker Dam – Existing Conditions
(Looking Upstream from Adams St.)**



**Baker Dam – Dam Removal
(Looking Upstream from Adams St.)**